



DEHUMIDIFIERS

FIELD INSTALLATION MANUAL

SerescoDehumidifiers.com

Table of Content

Contents

General Information	4
Operating Safety (Warnings, Cautions, and Notes)	4
Reference and Additional Information	5
Pool Water Temperature Sensor	6
Electrical connection	7
Piggy Back Option Instructions	9
Instruction for Installing for Block off panel in fan array	13
Purpose	13
Location of Block-Off Panel	13
Installation Requirements	14
Installation Steps	14
Note	14
Protective Hoods to be Installed	15
Electrical Panel Door	15
Gas Heating Panel	16

General Information

This manual provides instructions for field installed components required depending on the unit's options.

Important information regarding installation, maintenance, and start up as well as additional and auxiliary systems and devices (outdoor condenser, communication interfaces, etc.) is normally provided with the dehumidifier and can also be obtained from the manufacturer (see **Contact Us** below).

Operating Safety (Warnings, Cautions, and Notes)

FOR YOUR SAFETY: READ BEFORE PERFORMING ANY OPERATIONS, MAINTENANCE OR SERVICE TASKS!



Only qualified technicians should install, operate, maintain or service mechanical equipment including current dehumidification system.

Make sure to read this manual before performing any tasks to familiarize yourself with the equipment as well as with any potential hazards. Always exercise caution!



Beware of electrical power and high electrical voltage!

- Follow proper safety procedures – lockout, tagout, and other respective procedures
- Failure to follow safety procedures can result in serious injury or death



Beware of moving parts and hot surfaces!

- Make sure to stop all moving parts (fans, blowers, etc.) before accessing the equipment's internal space
- Be aware of hot surfaces (hot refrigeration, space heating pipes, coils, heaters, etc.)



Beware of high pressures and chemicals!

- Dehumidifiers, equipped with compressors, contain refrigerant under high pressure; oil is also contained in the compressor and refrigeration circuit(s)
- Some dehumidifiers may also contain other liquids such as glycol mixtures and pool water

The following warnings, cautions, and notes appear throughout this manual and referenced documentation whenever special care must be taken to avoid potential hazards that could result in equipment malfunction or damage, personal injury, or death.



WARNING

Indicates a potentially hazardous situation which could result in serious injury or death if handled improperly.



CAUTION

Indicates a potentially hazardous situation which could result in moderate injury or equipment damage if handled improperly.

Note

Indicates a situation that could result in equipment damage or improper/ineffective operation if handled improperly.

Reference and Additional Information

For safe, efficient and problem-free operation, it is critical to handle the dehumidifier (as well as related systems and components) properly at each step - from receiving and storage to installation and start up. Relevant information can be found in the respective documents (like **Installation Manual**) provided with the dehumidifier.

This manual and other related documents could be obtained from the manufacturer (see **Contact Us** below).

Attention: Installation and Service Contractors



WARNING! Any work (installation, start up, service, maintenance, repair, etc.) on any mechanical equipment (dehumidifier, outdoor condenser, fluid cooler, etc.) must be performed in accordance with respective manufacturer's recommendations as well as submittal documentation, local Codes and Regulations, and appropriate field practices. Failure to do so could result in personal injury, equipment damage or malfunction, and will void equipment warranty. Only qualified and properly trained individuals should perform tasks on this equipment.

Attention: Maintenance Team



CAUTION. To ensure equipment longevity and proper and efficient operation, the dehumidifier and its auxiliary systems and devices (outdoor condenser, fluid cooler, boiler package, etc.) should be maintained properly and regularly. Failure to do so could negatively affect premise comfort levels and people's health. It could also lead to equipment damage, malfunction, premature wear and tear and may void equipment warranty.

Contact Us

Seresco
1071 Ages Drive
Ottawa, ON K1G 6L3
Canada

SerescoDehumidifiers.com

1-833-DAS-POOL (327-7665)

Schedule / Modify a Start-up:

Scheduling@DehumidifiedAirServices.com

Inquire about Warranty:

Warranty@DehumidifiedAirServices.com

Order Parts:

Parts@DehumidifiedAirServices.com

All Other Product Support:

Support@DehumidifiedAirServices.com

Pool Water Temperature Sensor

The dehumidifier normally requires constant waterflow through (to ensure proper automatic control over pool heating feature); however, if requested, it could be equipped with means to control auxiliary pump. This set up would also require a pool water temperature sensor to be installed in the external pool water manifold/piping.

By default, full pool water flow should be established to the dehumidifier and remain present 24/7. However, should an auxiliary pump be used and flow to the dehumidifier be desired only when utilizing compressor circuit pool heating, the Smart Pump feature may be utilized.

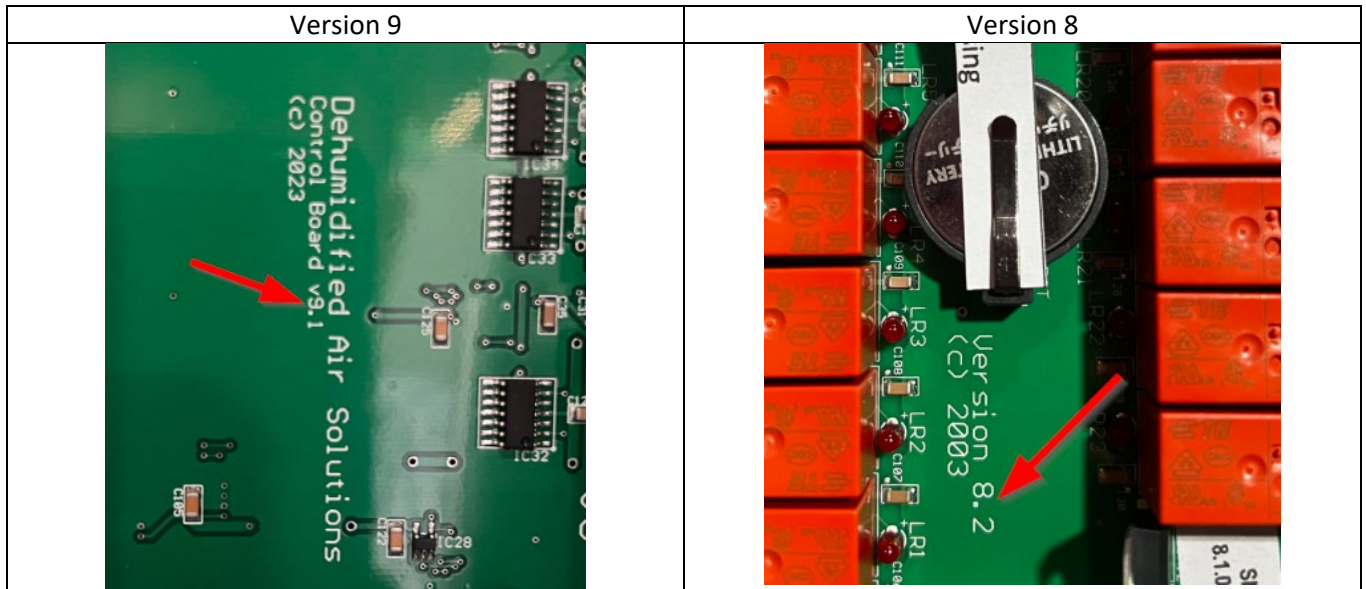
To utilize the Smart Pump feature, a pool water temperature sensor must be installed within a temperature sensor well in the primary pool water piping and wired to the dehumidifier. The auxiliary pump enable circuit must also be wired to the dehumidifier. When used, the dehumidifier will enable the auxiliary loop pump supplying pool water flow to the dehumidifier only when the unit is operating in pool water heating mode.



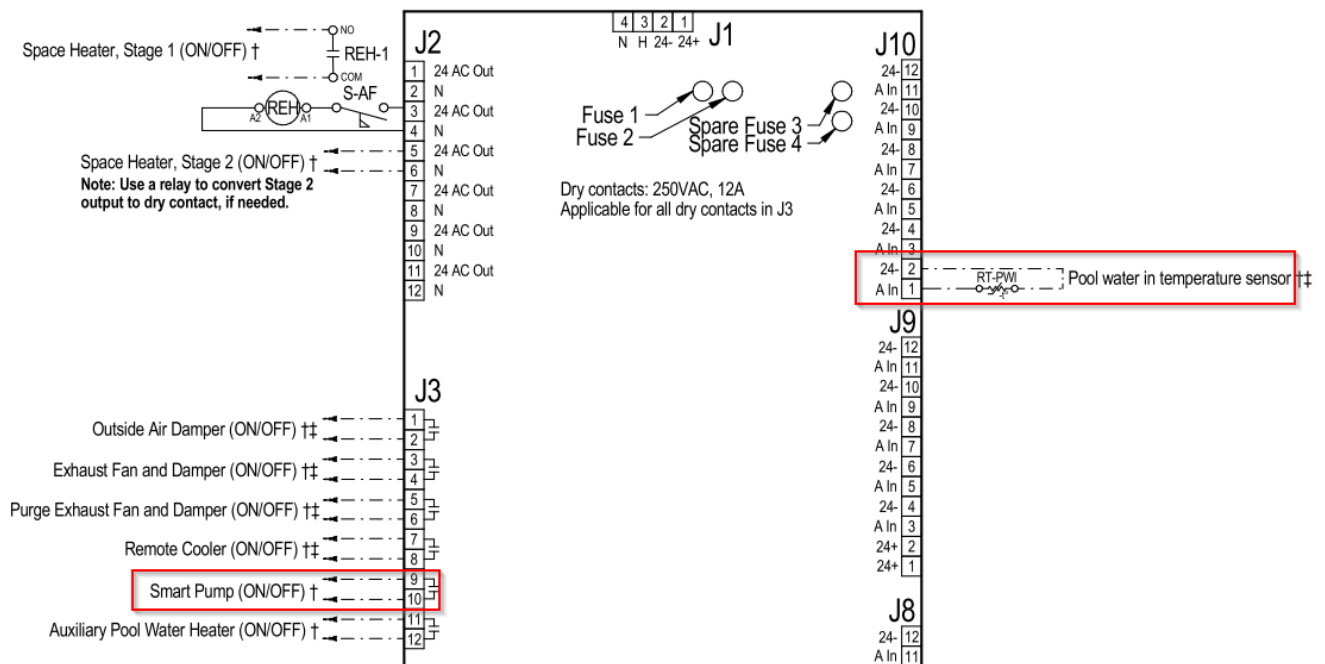
Electrical connection

Follow the proper electrical connection located on the field wiring diagram

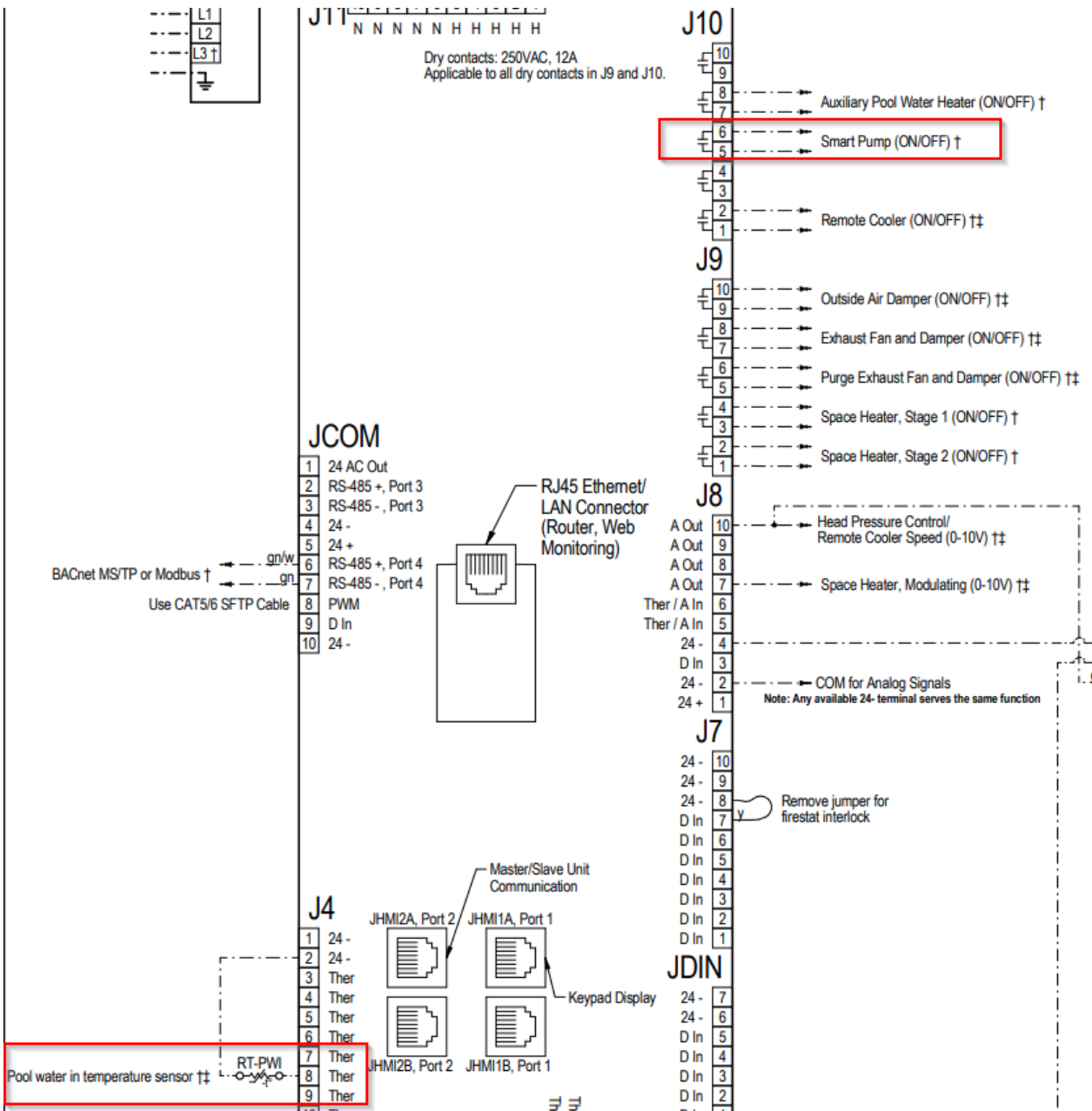
Validate if the board is version 8 or version 9



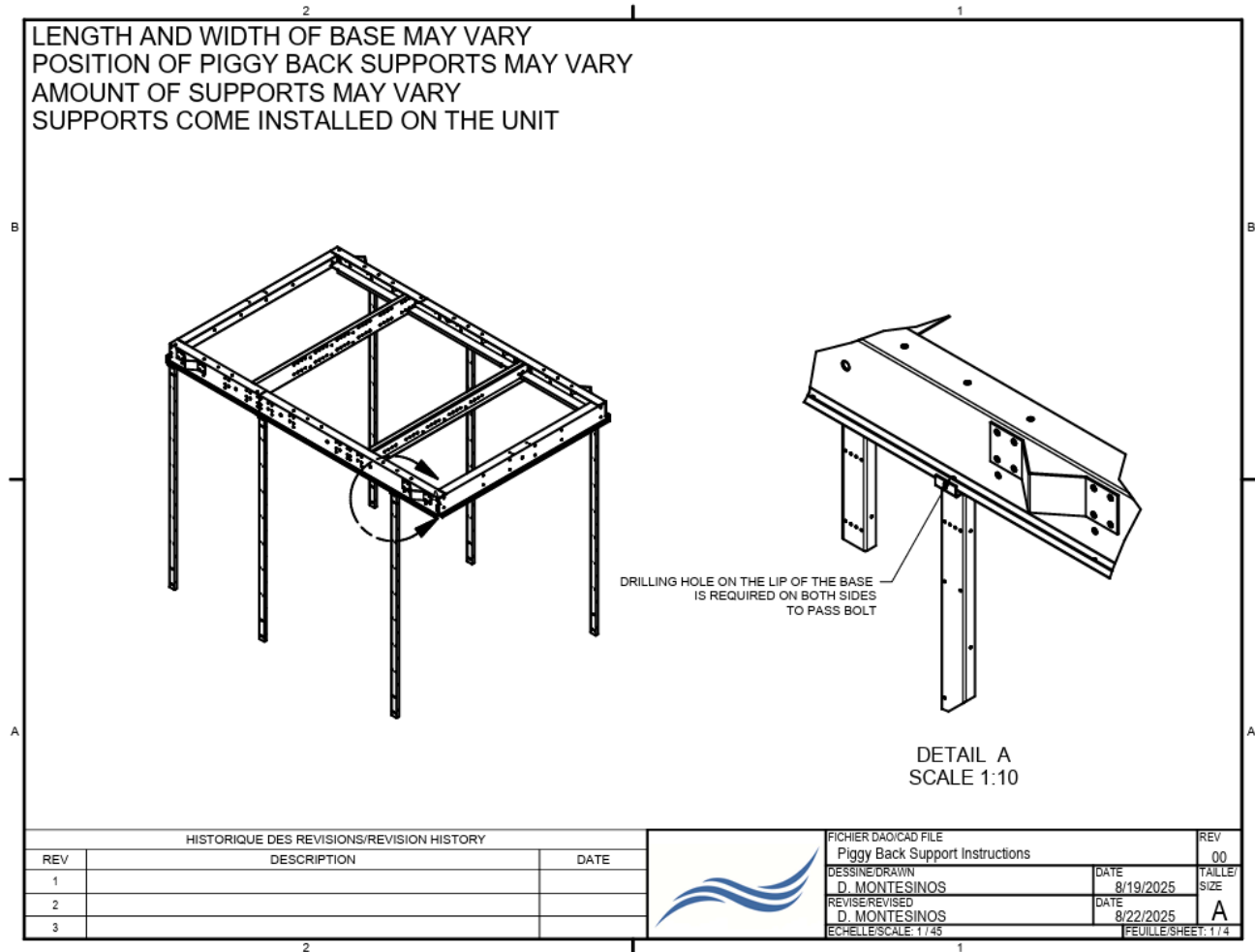
Version 9 Board



Version 8 Board

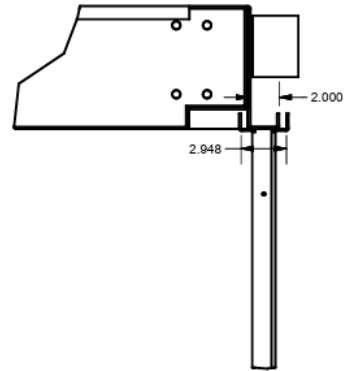
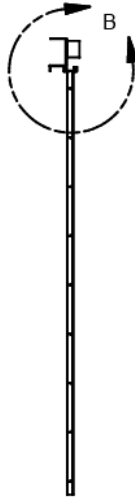


Piggy Back Option Instructions




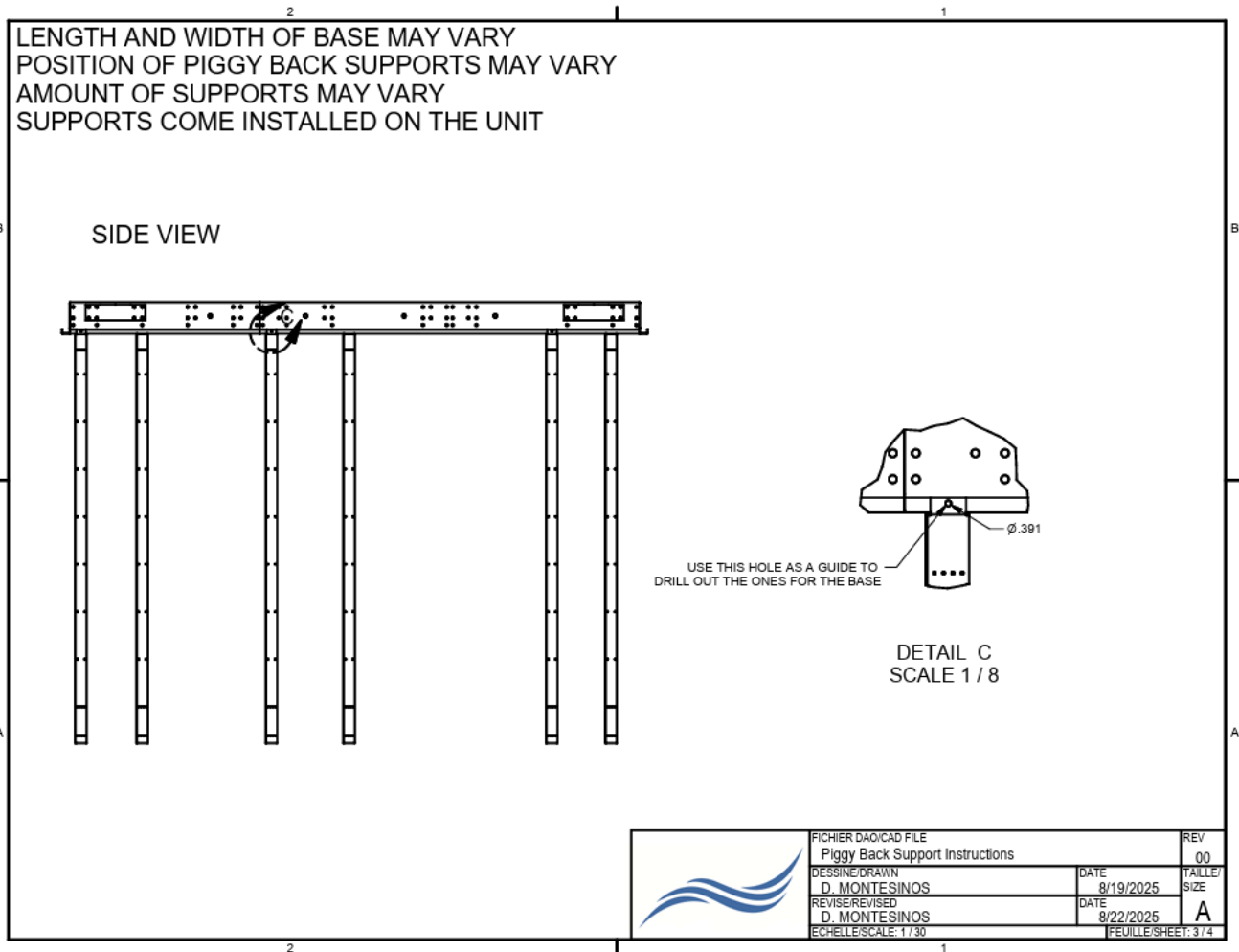
LENGTH AND WIDTH OF BASE MAY VARY
 POSITION OF PIGGY BACK SUPPORTS MAY VARY
 AMOUNT OF SUPPORTS MAY VARY
 SUPPORTS COME INSTALLED ON THE UNIT

SECTION VIEW OF THE BASE

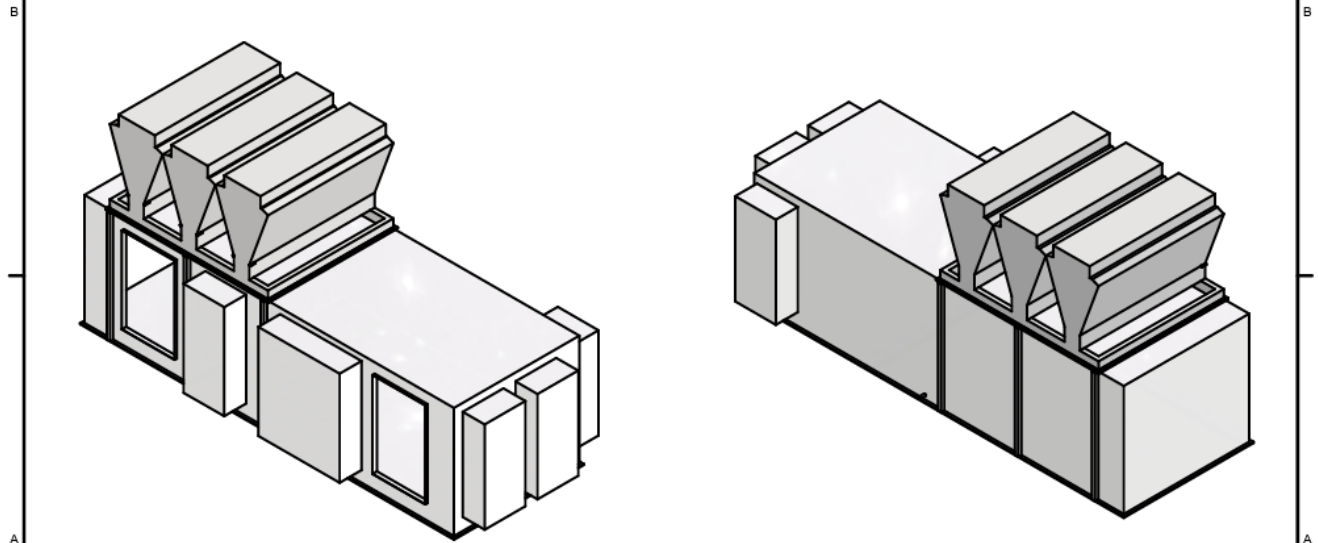



DETAIL B
 SCALE 1 / 8

	FICHER DAO/CAD FILE		REV
	Piggy Back Support Instructions		00
	DESSINE/DRAWN	DATE	TAILLE/
	D. MONTESINOS	8/19/2025	SIZE
	REVISE/REVISED	DATE	A
	D. MONTESINOS	8/22/2025	
ECHELLE/SCALE 1 / 30			FEUILLE/SHEET 2 / 4



2 1
 LENGTH AND WIDTH OF BASE MAY VARY
 POSITION OF PIGGY BACK SUPPORTS MAY VARY
 AMOUNT OF SUPPORTS MAY VARY
 SUPPORTS COME INSTALLED ON THE UNIT
 DIMENSIONS AND OPTIONS OF THE UNIT MAY VARY



	FICHER DAO/CAD FILE		REV
	Piggy Back Support Instructions		00
	DESSINE/DRAWN	DATE	TAILLE/
	D. MONTESINOS	8/19/2025	SIZE
	REVISE/REVISED	DATE	A
	D. MONTESINOS	8/22/2025	
ECHELLE/SCALE: 1/80		FEUILLE/SHEET: 4/4	

Instruction for Installing for Block off panel in fan array

Purpose

This instruction applies **only** when one fan in the fan array fails. A block-off panel can be temporarily installed to cover the fan opening.

This measure prevents air from recirculating through the failed blower and ensures the equipment continues to operate with slightly reduced airflow until the replacement blower is installed.

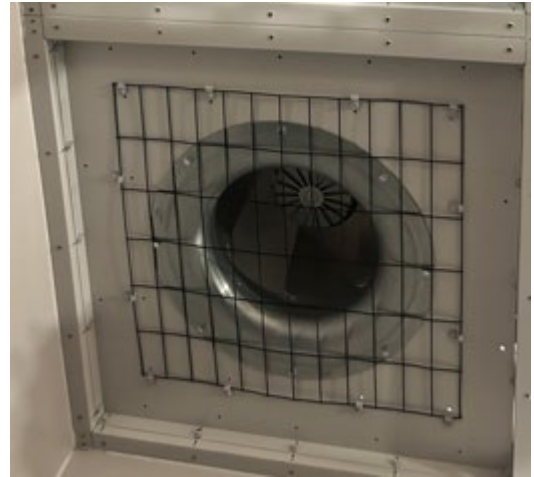


FIGURE 1: FAN ARRAY

Location of Block-Off Panel

- There are two panels, stored behind the entry/exit door in the fan array area, stacked together to form a rectangular shape and secured to the door with screws.



FIGURE 2: LOCATION OF BLOCK-OFF PANELS BEHIND THE DOOR.

Installation Requirements

- **Total screws needed: 12** (If there are not enough screws available, temporarily remove few **screws from the wire mesh** in the area.)

Installation Steps

1. Position **one panel** (no preference) as shown in the reference diagram, covering the **lower half** of the fan opening.
2. Secure the panel with screws.

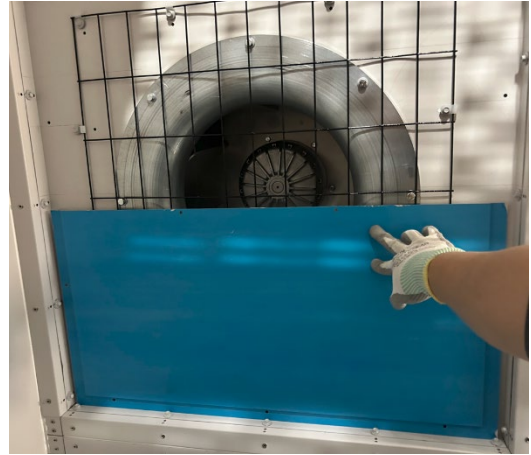


FIGURE 3: EXAMPLE OF PANEL INSTALLATION
ON FAN OPENING

3. Position the **second panel** to cover the **upper half**, ensuring both panels fit tightly together.
4. Fasten the second panel with screws.
5. Verify that the panels are firmly attached and the opening is completely sealed.

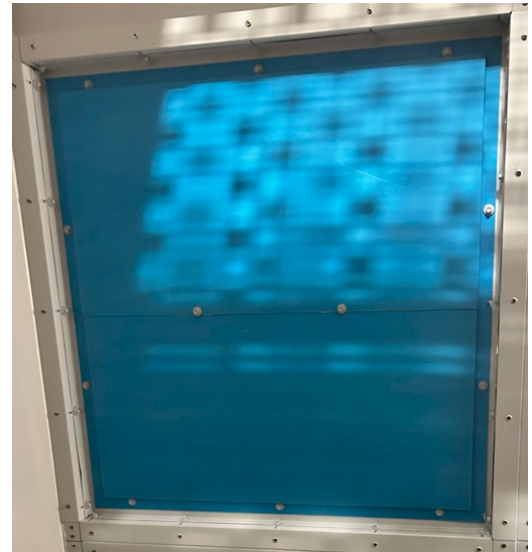


FIGURE 4: COMPLETED INSTALLATION SHOWING TWO PANELS
SECURED TOGETHER

Note

- Ensure all screws are tightened securely to prevent vibration or air leakage.

Protective Hoods to be Installed

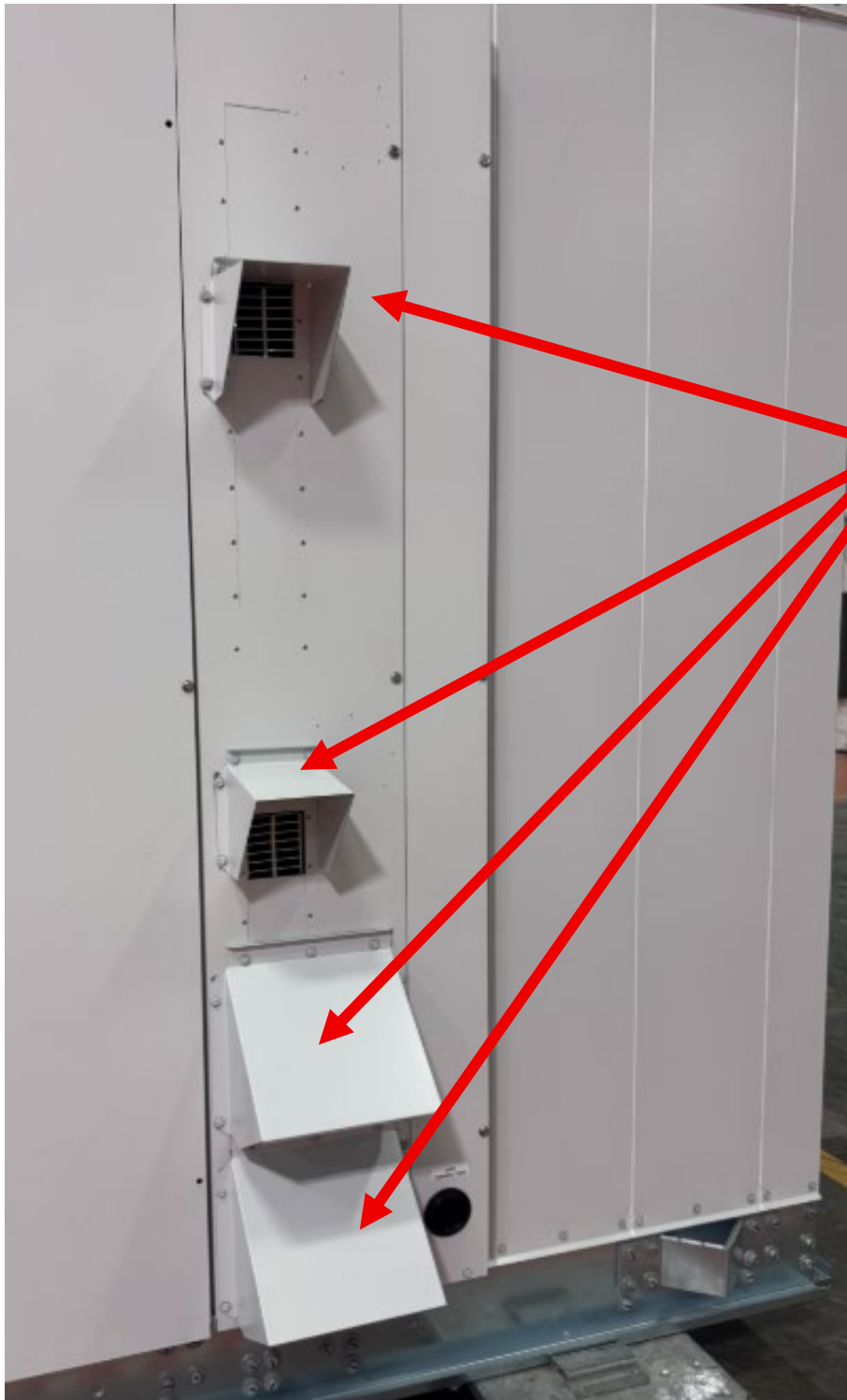
Units may be provided without protective hoods already installed on the unit. All hoods should be installed to offer protection to external debris and rain to only have air passing through without any contamination/obstructions. Hoods can be found stored inside the unit.

Electrical Panel Door



If not already installed, hoods should be placed to cover the openings. Hoods can be found inside the unit

Gas Heating Panel



If not already installed, hoods should be placed to cover the openings. Hoods can be found inside the unit