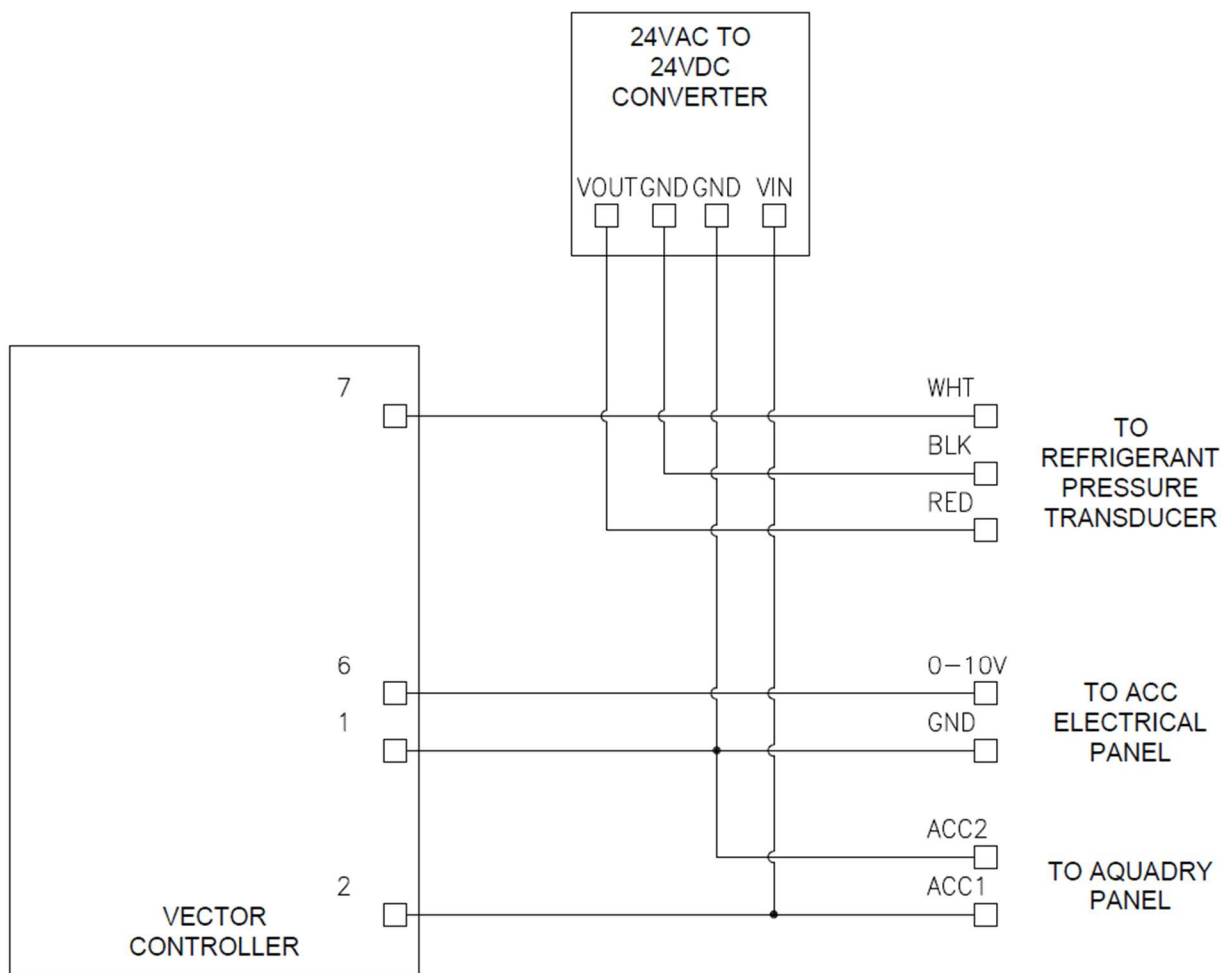


Vector TCI-W OAC Control Accessory Panel Installation and Wiring

Outdoor Air Condensers series NC-Z and NC-B, used with AquaDry dehumidifier, are typically provided with **OAC Accessory Control Kit** to control/adjust OAC fan operation (speed) based on the compressor head pressure.

Kit includes following:

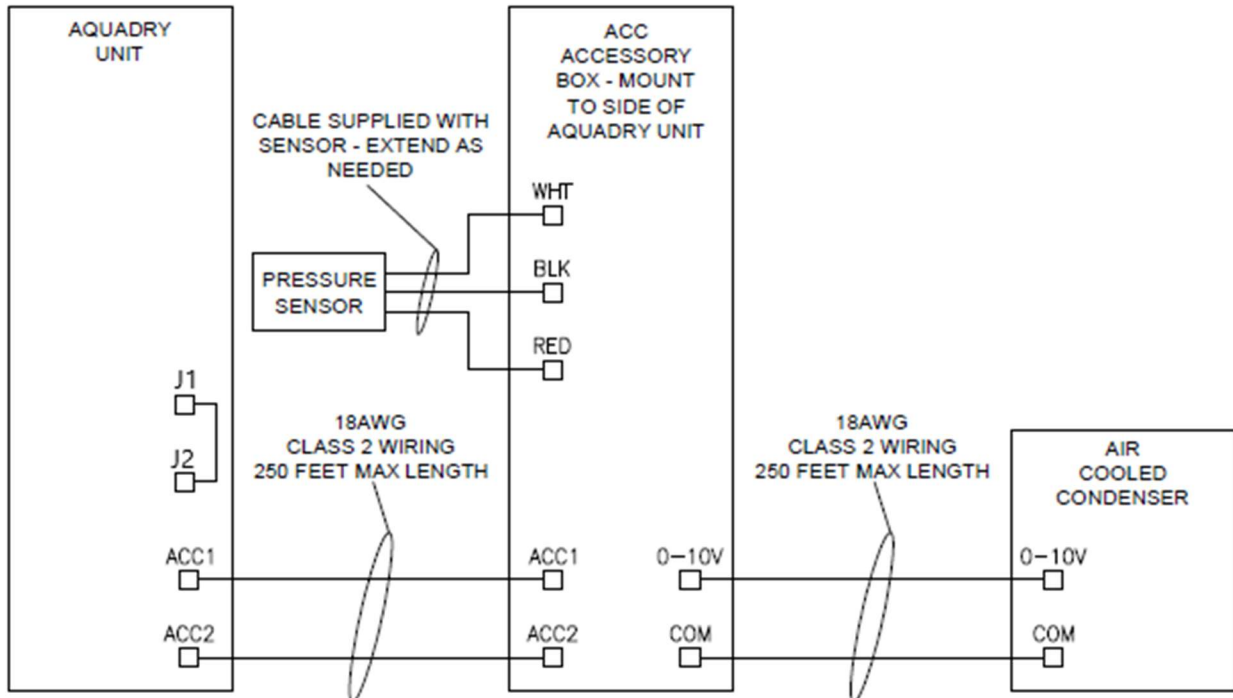
- **Accessory Box**, that contains **Vector TCI-W Universal Controller** and other pre-wired electrical and control devices.
 - Vector Controller typically comes from the factory pre-configured. For basic info regarding controller configuration and set up (applicable to AquaDry dehumidifier OAC) and navigation – refer to **Vector TCI-W OAC Controller Set Up and Navigation** document; for more details on this controller – refer to **controller manufacturer documentation**.
 - Internal wiring of the Accessory Box is shown on the Pic. Y-1 below for reference only – box comes from the factory internally wired.
- Refrigerant **Pressure Transducer**.



Pic. Y-1

OAC Accessory Control Kit Installation

1. Install **Pressure Transducer** on the refrigerant line feeding OAC (hot gas line).
 - a. Ensure that installed transducer does not point downward.
 - b. Transduce shall be installed indoors. It is acceptable to mount it onto hot gas ball valve access port of the AquaDry dehumidifier (refer to the AquaDry manual as needed to locate said port); it is also acceptable to mount the transducer on the field-installed dedicated (if any) access port on the hot gas line in the vicinity of the dehumidifier.
 - i. For refrigeration-related tasks requirements – refer to respective chapters of AquaDry Manual, applicable local and national Codes and Regulations and proper field practices.
2. Install **Accessory Box** in the vicinity (close to) of AquaDry dehumidifier.
 - a. Ensure that access to the box and to the dehumidifier itself is not restricted.
3. Connect **Accessory Box** to **AquaDry electrical panel** and Outdoor Air Cooled Condenser (OAC) as shown on the Pic. Y-2 below.
 - a. Pressure transducer is provided with its own plug-in wire harness; if harness is not long enough to reach Accessory Box – extend the wires as needed with 18AWG class 2 wire.
 - b. Ensure, that jumper between terminals J1 and J2 in AquaDry electrical panel is in place.



Pic. Y-2