

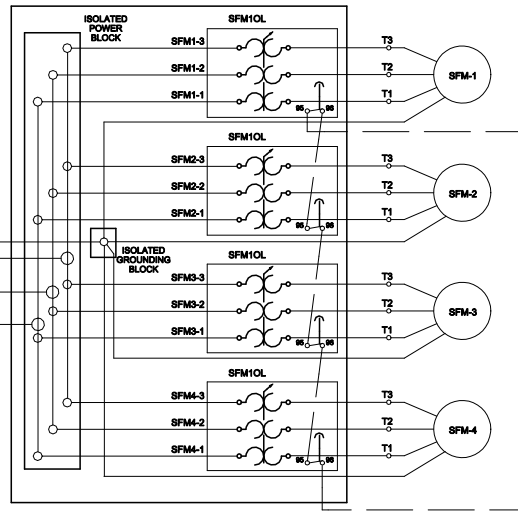
⚠ WARNING
 HAZARDOUS VOLTAGE!
 DISCONNECT POWER BEFORE SERVICING.

FAILURE TO DISCONNECT POWER BEFORE SERVICING MAY CAUSE SEVERE PERSONAL INJURY OR DEATH.

⚠ AVERTISSEMENT
 VOLTAGE HAZARDEUX!
 DECONNECTEZ LA SOURCE ELECTRIQUE AVANT D'EFFECTUER L'ENTRETIEN

FAUTE DE DECONNECTER LA SOURCE ELECTRIQUE AVANT D'EFFECTUER L'ENTRETIEN DES BLESSURES CORPORELLES SEVERES OU LA MORT.

- NOTES:
1. TRANSFORMER PRIMARY CONNECTIONS ARE SHOWN FOR 480V. REFER TO DIAGRAM ON TRANSFORMER FOR PROPER CONNECTION OF OTHER VOLTAGES.
 2. BREAKER AMPACITY SIZING IS SUPPLY VOLTAGE DEPENDENT.



LEGEND		
DEVICE DESIGNATION	DESCRIPTION	LINE NUMBER
SHEET 1		
AUXHTBRK	AUX. HEATER BREAKER (OPT.)	58
AUXHTMOD	AUX. HEATER MODULE (OPT.)	58
C1MSP	COMPR. MODULE 1 MTR STARTER PROT.	9
C2MSP	COMPR. MODULE 2 MTR STARTER PROT.	14
C3MSP	COMPR. MODULE 3 MTR STARTER PROT.	18
CCHBR	COMPR. MSTR. CRANKCASE HTR. BRKR.	77
CLI - 4	CONVENIENCE LGTS, 1 - 4	59
CO	CONVENIENCE OUTLET	64
COBR	CONVENIENCE OUTLET BREAKER	64
CPBR	CONTROL PANEL BREAKER	90
CPL 1-2	CONTROL PANEL LIGHTS 1-2	57
CPS	CONTROL PANEL SWITCH	96
DCPS	DC POWER SUPPLY	101
EFM	EXHAUST FAN MOTOR	23
EFMSP	EXHAUST FAN MTR. STR. PROTECTOR	23
EFMVFD	EXHAUST FAN VFD	23
HRPMC (opt.)	HEAT RECOVERY PUMP MTR. CONTACTOR	53
HRPMSP (opt.)	HEAT RECOVERY PUMP MTR. STR. PROT.	53
HT	HEAT TAPE	93
HTT	HEAT TAPE THERMOSTAT	93
HTBR	HEAT TAPE BREAKER	93
MPB	MAIN POWER BLOCK	2
PFM-1	PURGE FAN MOTOR 1	42
PFM-2	PURGE FAN MOTOR 2	46
PFM1OL	PURGE FAN MOTOR 1 OVERLOAD	42
PFM2OL	PURGE FAN MOTOR 2 OVERLOAD	46
PFMSP	PURGE FAN MOTOR STR. PROT.	40
PFMVFD	PURGE FAN MOTOR VFD	40
PM	POWER MONITOR	69, 93
SCCR-IFM	SHORT CIRCUIT CURRENT RATED- INTRM. FUSE MOD.	63
SFM-1	SUPPLY FAN MOTR 1	21
SFM-2	SUPPLY FAN MOTOR 2	26
SFM-3	SUPPLY FAN MOTOR 3	30
SFM-4	SUPPLY FAN MOTOR 4	34
SFM1OL	SUPPLY FAN MOTOR 1 OVERLOAD	21
SFM2OL	SUPPLY FAN MOTOR 2 OVERLOAD	26
SFM3OL	SUPPLY FAN MOTOR 3 OVERLOAD	30
SFM4OL	SUPPLY FAN MOTOR 4 OVERLOAD	34
SFMSP	SUPPLY FAN MOTOR STR. PROT.	29
SFMVFD	SUPPLY FAN MOTOR VFD	29
TR1	TRANSFORMER 1- 1500 VA POWER	85
TR2	TRANSFORMER 2- 24 VAC 75 VA MCP	101
TR3	TRANSFORMER 3- 24 VAC 75 VA CMR MOD	101
TR4	TRANSFORMER 4 - 1500 VAC CL	69
TR1BR	TRANSFORMER 1- CIRCUIT BREAKER	80
TR4BR	TRANSFORMER 4- CIRCUIT BREAKER	71
SPARE- FUTURE		

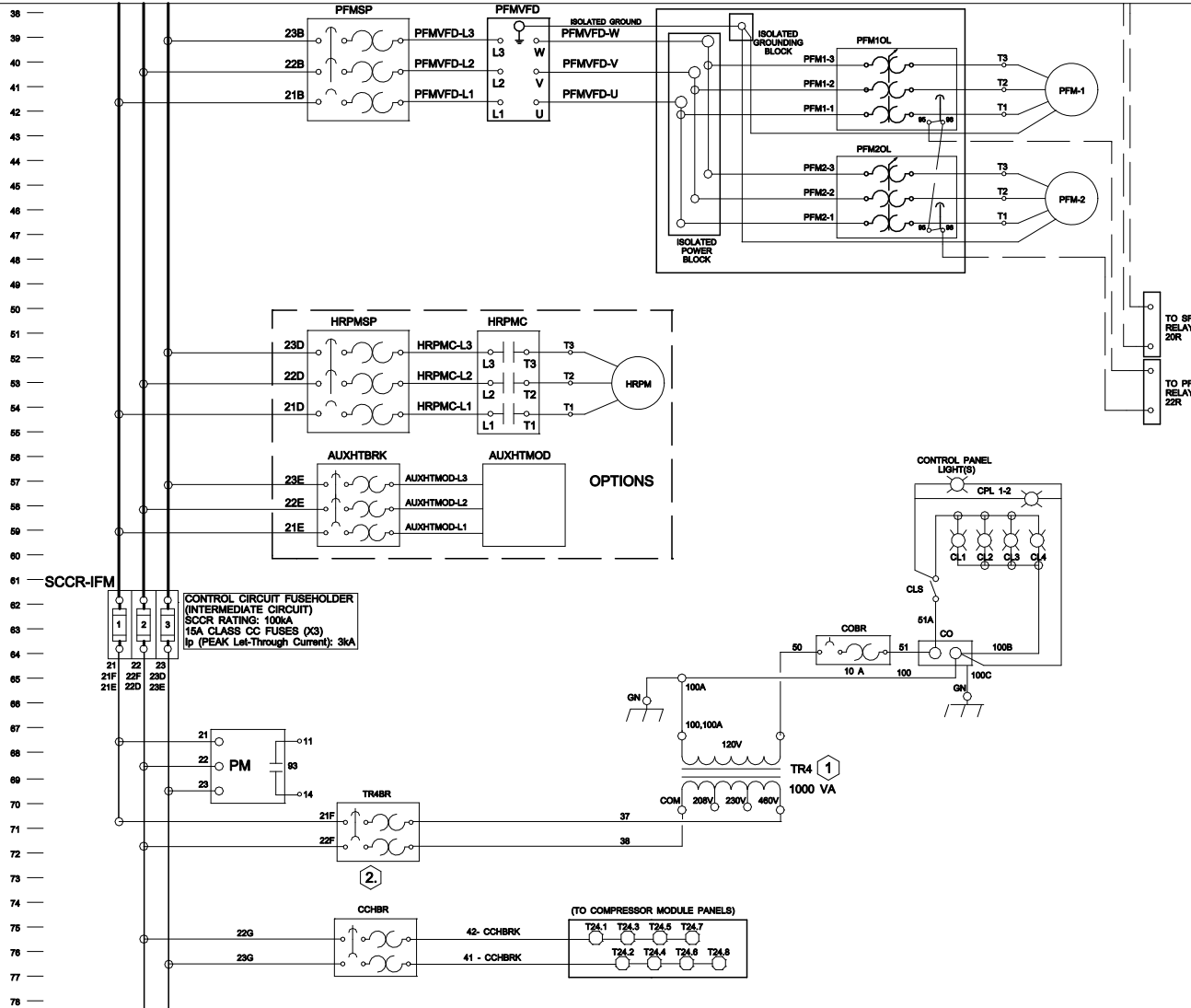
OUTPUT RELAYS		
10R	AUX HEAT #1 (AUXHT1)	117(connected/130(not))
11R	AUX HEAT #2 (AUXHT2)	121/131
12R	AUX HEAT #3 (AUXHT3)	126/132
13R	AUX COOL #1 (AUXCL1)	131/133
14R	AUX COOL #2 (AUXCL2)	135/134
15R	AUX COOL #3 (AUXCL3)	140/135
16R	ALARM	145/136
17R	AUX WATER #1 (AUXWTR1)	150/137

35-0200-001C.1

35-0200-001C.2

35-0200-001C.1

35-0200-001C.2



35-0200-001C.2

35-0200-001C.3

18R	AUX WATER #2 (AUXWTR2)	154/138
19R	EXTERNAL EXHAUST (EXTEXH)	157/139
20R	SUPPLY FAN VFD RUN RELAY (SFRUN)	161/140
21R	EXHAUST FAN VFD RUN RELAY (EFRUN)	165/141
22R	PURGE FAN VFD RUN RELAY (PFRUN)	169/142
23R	SMART PUMP RUN RELAY (SMARTPUMP)	172/169
24R	REMOTE ACC 1 RUN	178/144
25R	REMOTE AAC 2 RUN	179/145
26R	REMOTE ACC 3 RUN	182/146
	SPARE- FUTURE	

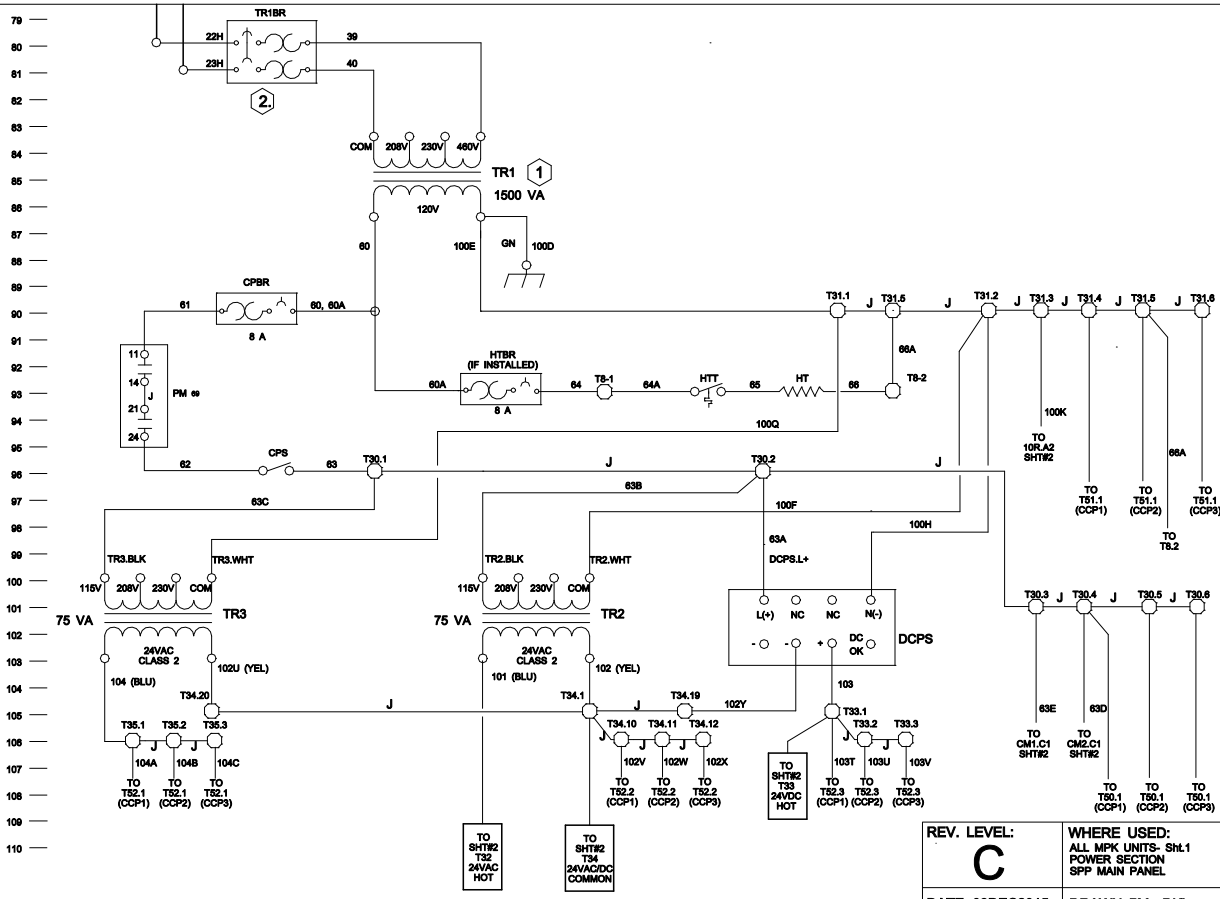
CONTROLLERS		
CM1	MASTER CONTROLLER (Address 0)	112-162
CM2	SLAVE CONTROLLER (Address 1)	166-175
CM3	SLAVE CONTROLLER (Address 2)	178-187
CM4	SLAVE CONTROLLER (Address 3)	191-200
CM5	SLAVE CONTROLLER (Address 4)	204-213
CM6	SLAVE CONTROLLER (Address 5)	218-228

DIGITAL INPUTS		
SP	SMOKE PURGE	120 (CM1)
FT	FIRE TRIP	121 (CM1)
OO	OCCUPANCY OVERRIDE	122 (CM1)
PM	PURGE MODE	123 (CM1)
EM	EVENT MODE	124 (CM1)
SVM	SUMMER VENTILATION MODE	125 (CM1)
REFS	REMOTE EXHAUST FAN STATUS	126 (CM1)
FZST	FREEZESTAT	127 (CM1)
ACCP	AIR COOLED CONDENSER PROOF	128 (CM1)
SPVFDFLT	SUPPLY FAN VFD FAULT	132 (CM1)
SPVFDWRNG	SUPPLY FAN VFD WARNING	133 (CM1)
SPVFDRUN	SUPPLY FAN VFD RUN	134 (CM1)
EPVFDFLT	EXHAUST FAN VFD FAULT	136 (CM1)
EPVFDWRNG	EXHAUST FAN VFD WARNING	136 (CM1)
EPVFDRUN	EXHAUST FAN VFD RUN	137 (CM1)
PFVFDFLT	PURGE FAN VFD FAULT	138 (CM1)
PFVFDWRNG	PURGE FAN VFD WARNING	138 (CM1)
PFVFDRUN	PURGE FAN VFD RUN	140 (CM1)
CCHAUX	CRANKCASE HEATER PROOF	174 (CM2)
MR/PD	MASTER RUN/ PUMP DOWN SWITCH	175 (CM2)
	SPARE- FUTURE	

ANALOG INPUTS		
SPVFDICUR	SUPPLY FAN VFD INPUT CURRENT SIGNAL	142 (CM1)
EPVFDICUR	EXHAUST FAN VFD INPUT CURRENT SIGNAL	143 (CM1)
PFVFDICUR	PURGE FAN VFD INPUT CURRENT SIGNAL	144 (CM1)
RECRC DPR FB	RECIRCULATION DAMPER FEEDBACK	147 (CM1)
OA DPR FB	OUTSIDE AIR DAMPER FEEDBACK	148 (CM1)
EVAP BP DPR FB	EVAPORATOR BYPASS DAMPER FEEDBACK	149 (CM1)
RAT	RETURN AIR TEMPERATURE	154 (CM1)
OAT	OUTSIDE AIR TEMPERATURE	156 (CM1)
AOEV	AIR OFF EVAPORATOR FEEDBACK	158 (CM1)
ST	SURFACE TEMPERATURE	160 (CM1)
RAFLTRPD	RETURN AIR FILTER PRESSURE DROP	166 (CM2)

35-0200-001C.2

35-0200-001C.3



OAFTRPD	OUTSIDE AIR FILTER PRESSURE DROP	168 (CM2)
RACO2	RETRUN AIR CO2 (OPTIONAL)	171 (CM2)
RMTSP	REMOTE SPACE PRESSURE (OPTIONAL)	173 (CM2)
SPLYT	SUPPLY AIR TEMPERATURE	180 (CM3)
OARH	OUTSIDE AIR RELATIVE HUMIDITY	193 (CM4)
AOEVRH	AIR OFF EVAPORATOR RELATIVE HUMIDITY	194 (CM4)
RARH	RETURN AIR RELATIVE HUMIDITY	195 (CM4)
RARRH	RETURN AIR RELATIVE HUMIDITY	195 (CM4)
PFDP	PURGE FAN DP (AIRFLOW)	205 (CM5)
EFPD	EXHAUST FAN DP (AIRFLOW)	207 (CM5)
SFPD	SUPPLY FAN DP (AIRFLOW)	208 (CM5)
OAAF	OUTSIDE AIR AIRFLOW	211 (CM5)
PL#1WTRTMP	POOL #1 WATER TEMPERATURE	219 (CM6)
PL#2WTRTMP	POOL #2 WATER TEMPERATURE	221 (CM6)
PL#1WTRDP	POOL #1 WATER DIFFERENTIAL PRESSURE	223 (CM6)
PL#2WTRDP	POOL #2 WATER DIFFERENTIAL PRESSURE	225 (CM6)
ANALOG OUTPUTS		
RECIRCMPR	RECIRCULATION DAMPER SIGNAL	153 (CM1)
OADMPR	OUTSIDE AIR DAMPER SIGNAL	155 (CM1)
EVBPDMPR	EVAPORATOR BYPASS DAMPER SIGNAL	157 (CM1)
AUXAH	AUXILIARY AIR HEAT SIGNAL	172 (CM2)
AUXACLG	AUXILIARY AIR COOLING SIGNAL	1838 (CM3)
EFVFDSPD	EXHAUST FAN VFD SPEED SIGNAL	197 (CM4)
SFVFDSPD	SUPPLY FAN VFD SPEED SIGNAL	208 (CM5)
PFVFDSPD	PURGE FAN VFD SPEED SIGNAL	224 (CM6)
SPARE- FUTURE		
SPARE- FUTURE		
MISC.		
J11/PLAN	MULTI-UNIT NETWORK/ RIU CONNECTION	125 (CM1)
J25/BMS2	PH-to-PH COMPRESSOR CONTROL MODULES	129 (CM1)
BMS	BUILDING MGMT SYS (IF INSTALLED)	149 (CM1)
J23/FBUS2	FIELDBUS- MSTR TO SLV CONTROLLER PORT	160 (CM1)
JS	CM2-CM6 CONTROLLER COMMUNICATION	174/180/192/205/219
SPARE- FUTURE		
SPARE- FUTURE		
SPARE- FUTURE		
SPARE- FUTURE		

REV. LEVEL: **C**
 DATE: 03DEC2015

WHERE USED:
 ALL MPK UNITS- Sht.1
 POWER SECTION
 SPP MAIN PANEL

DRAWN BY: DKL

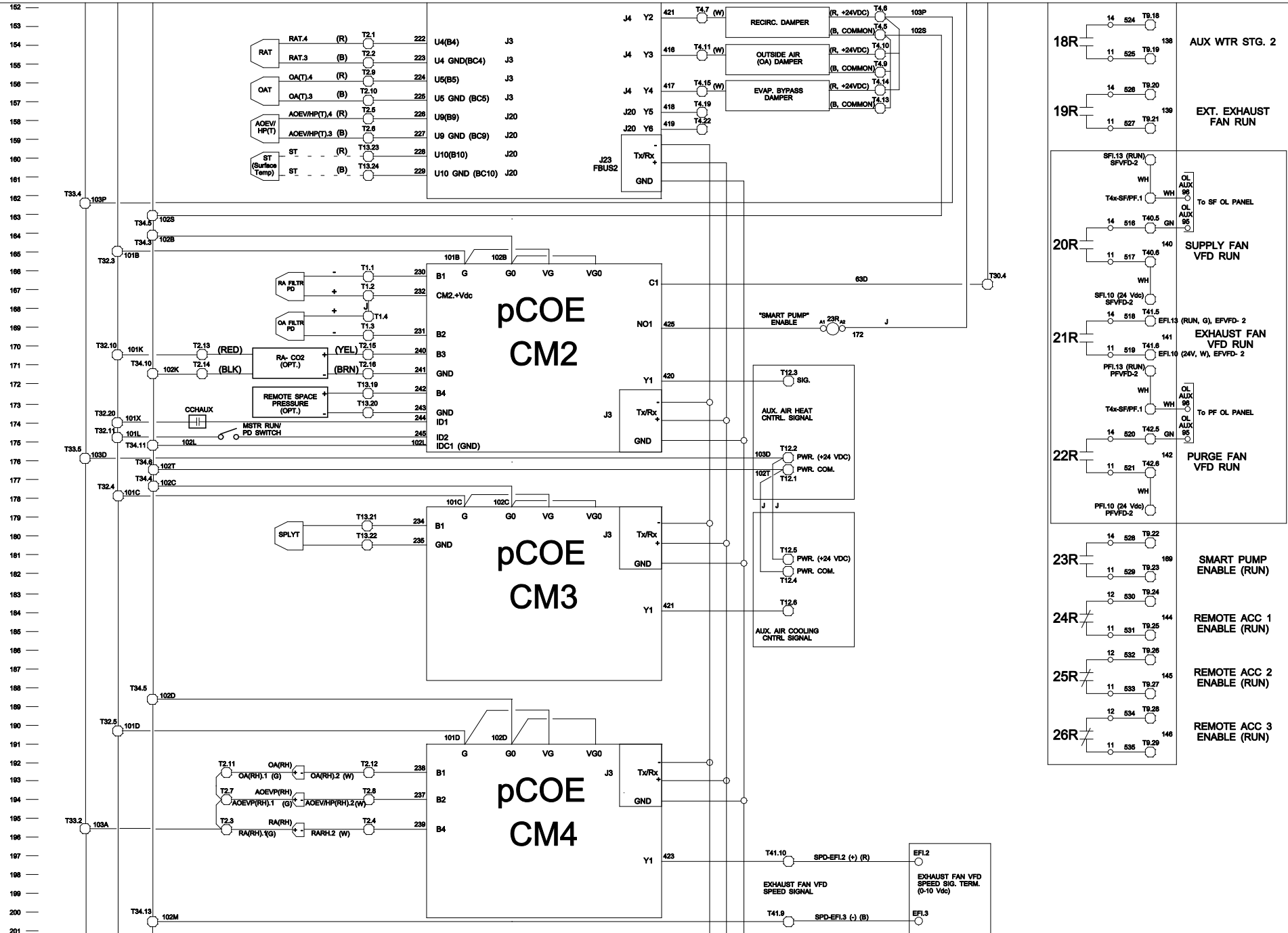


DWG. NO:
35-0200-001C

FILE:
 35-0200-001C (SPP).vcd

35-0200-003A.1

35-0200-003A.2

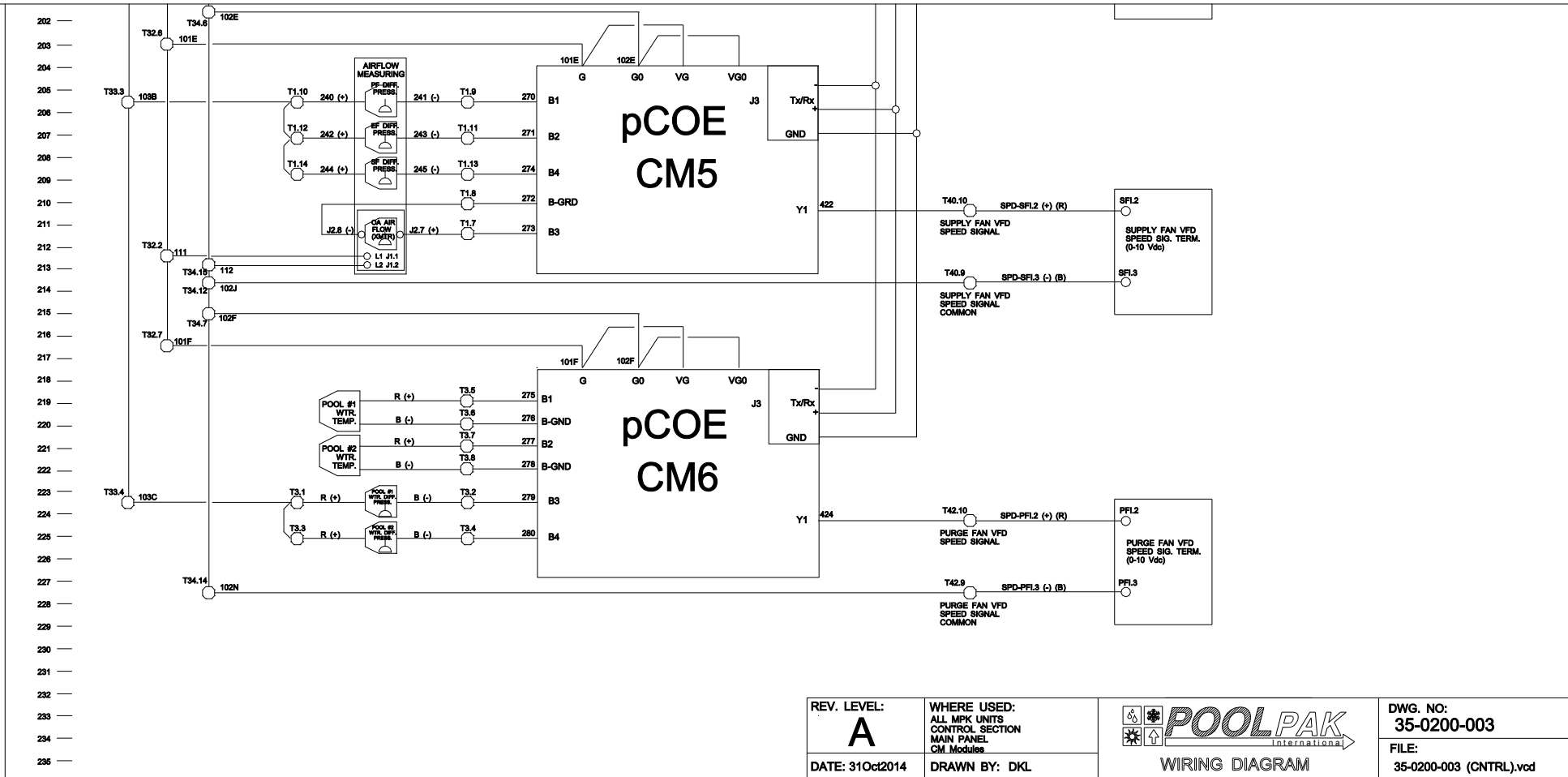


35-0200-003A.2

35-0200-003A.3

35-0200-003A.2

35-0200-003A.3



REV. LEVEL: A	WHERE USED: ALL MIPK UNITS CONTROL SECTION MAIN PANEL CM Modules		DWG. NO: 35-0200-003
DATE: 31Oct2014	DRAWN BY: DKL		WIRING DIAGRAM